

INSTALLATIONS

● Fixed System

● Mobile System

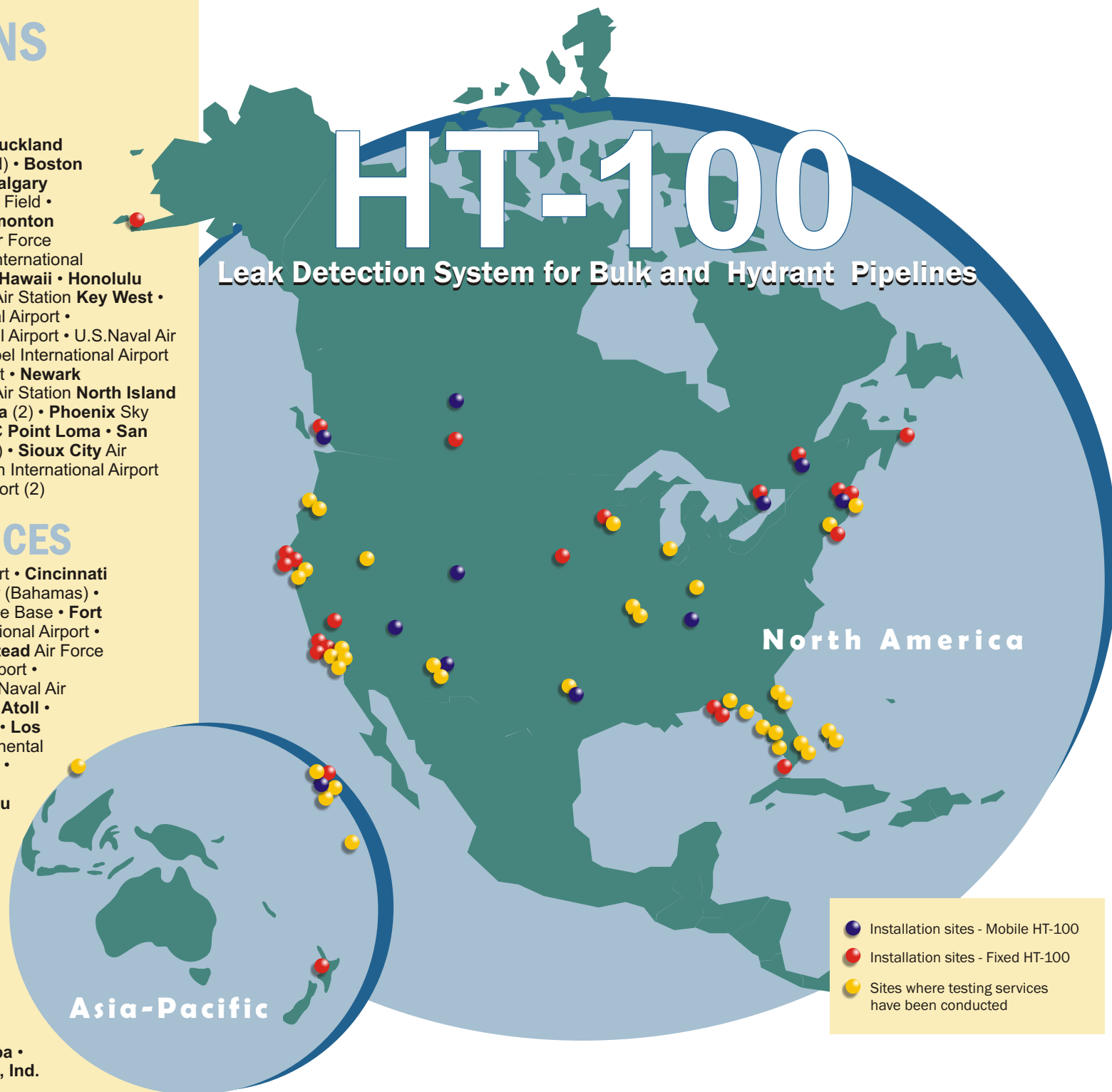
Anchorage Chevron Terminal • **Auckland** International Airport (New Zealand) • **Boston** Logan International Airport (3) • **Calgary** International Airport • **Dallas** Love Field • **Denver** International Airport • **Edmonton** International Airport • **Edwards** Air Force Base • **Fort Campbell** • **Halifax** International Airport • U.S. Marine Corps Base **Hawaii** • **Honolulu** International Airport • U.S. Naval Air Station **Key West** • **Las Vegas** McCarran International Airport • **Minneapolis-St. Paul** International Airport • U.S. Naval Air Station **Miramar** • **Montréal** Mirabel International Airport (2) and Dorval International Airport • **Newark** International Airport • U.S. Naval Air Station **North Island** • U.S. Naval Air Station **Pensacola** (2) • **Phoenix** Sky Harbor International Airport • FISC **Point Loma** • **San Francisco** International Airport (3) • **Sioux City** Air National Guard • **Toronto** Pearson International Airport (2) • **Vancouver** International Airport (2)

● TESTING SERVICES

Boston Logan International Airport • **Cincinnati** International Airport • **Clifton Pier** (Bahamas) • **Dallas** Love Field • **Eglin** Air Force Base • **Fort Myers** Southwest Florida International Airport • **Hickam** Air Force Base • **Homestead** Air Force Base • **Honolulu** International Airport • **Honolulu** Tesoro Terminal • U.S. Naval Air Station **Jacksonville** • **Johnston Atoll** • U.S. Naval Air Station **Kingsville** • **Los Angeles** American Airlines, Continental Air-lines • **MacDill** Air Force Base • FISC **Mayport** • **Minneapolis-St. Paul** International Airport • **Nassau** International Airport (Bahamas) • **New York** JFK International Airport • U.S. Naval Air Station **North Island** • **Oakland** International Airport • **Okinawa** DFSP Chimu-Wan • **Phoenix** Chevron Terminal • FISC **Point Loma** • **Portland** International Airport • **Portland** Chevron Terminal • **St. Louis** Boeing, Lambert Field • **San Francisco** International Airport • **Vancouver** International Airport • DFSP **Tampa** • **Tyndall** Air Force Base • **Whiting, Ind.** BP Amoco Terminal

HT-100

Leak Detection System for Bulk and Hydrant Pipelines



- Installation sites - Mobile HT-100
- Installation sites - Fixed HT-100
- Sites where testing services have been conducted